

Loading Buffer GREEN

Loading Buffer GREEN

Cat. No. E0262-01
Size 5 x 1ml

Storage Conditions:

Store at +4°C
(stable for 12 months)
Long term storage at -20°C.

6 x concentrated gel loading buffer

Description:

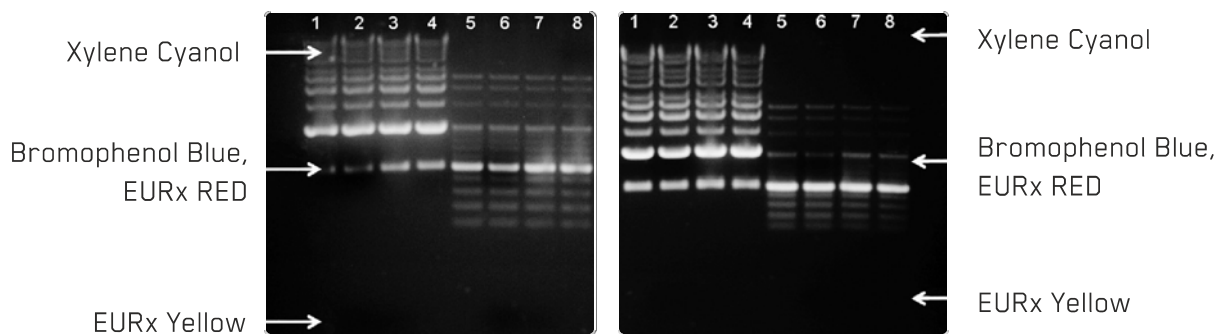
- 6 x Loading Buffer GREEN is designed for preparing DNA samples to load on agarose and polyacrylamide gels.
- The glycerol content increases the density of the sample and ensures that DNA form a layer at the bottom of the well.
- EDTA inhibits metal dependent nucleases.
- Tracking dyes permit monitoring of progress of electrophoresis.

Buffer Composition:

100 mM Tris-HCl (pH 8.0), mix of EURx dyes (Xylene Cyanol and EURx YELLOW), 30% glycerol, 100 mM EDTA (pH 8.0).

Recommended use:

1. Add 1 part of the buffer per 5 parts of DNA sample.
2. The exact position of dyes: Migration behavior of dyes (Xylene Cyanol and EURx YELLOW depends on both percentage of agarose gel and the buffer system in use (see below).



- 1 - Perfect 1 kb DNA Ladder (E3130) with Loading Buffer BLUE (E0260-01)
- 2 - Perfect 1 kb DNA Ladder (E3130) with Loading Buffer RED (E0261-01)
- 3 - Perfect 1 kb DNA Ladder (E3130) with Loading Buffer GREEN (E0262-01)
- 4 - Perfect 1 kb DNA Ladder (E3130) with Loading Buffer YELLOW (E0263-01)
- 5 - Perfect 100 bb DNA Ladder (E3134) with Loading Buffer BLUE (E0260-01)
- 6 - Perfect 100 bb DNA Ladder (E3134) with Loading Buffer RED (E0261-01)
- 7 - Perfect 100 bb DNA Ladder (E3134) with Loading Buffer GREEN (E0262-01)
- 8 - Perfect 100 bb DNA Ladder (E3134) with Loading Buffer YELLOW (E0263-01)